

4. Whales module

Module link: <https://my.whalepro.org/wallets>

4.1. Module overview

The Whales module allows you to:

1. Track wallets on charts in the familiar TradingView-like interface.
2. Access a database of whale wallets via a graphical interface so you can filter addresses like products in an online store and get the selection you need.

As soon as we find a wallet (a whale) whose behavior we like on the chart (for example, it tended to sell at price peaks and accumulate at bottoms), we should set up a notification that arrives on our phone (preferably in Telegram) and configure it to our needs.

The screenshot displays the Whales module interface. On the left, a sidebar (labeled 1) contains various filter options: Address, Success on 2021, First active date earlier than, Last active date, AVG wallet activity, Balance, Last transaction volume, AVG buy price, AVG sell price, AVG price, and Total money spent usd. The main area (labeled 2) shows a 'Wallets' table with columns: Address, Balance, Last trs, AVG price, AVG buy price, AVG sell price, Last profit, and Success on 2021. Below this table is a 'My wallets list' (labeled 3) which includes a 'Name' column and icons for favorite and delete actions. The interface also includes search filters, 'Show: 25' dropdowns, and pagination controls.

1 — filters area for selecting wallets from the database.

2 — the table of wallets found by filters.

3 — the favorites area with wallets you liked.

First, let's look at the filter metrics for selecting wallets from the database.

ДД.ММ.ГГГГ



3

Last active date

ДД.ММ.ГГГГ



4

AVG wallet activity

select...



5

Balance

От...

До...

6

Last transaction volume

От...

До...

7

AVG buy price

От...

До...

8

AVG sell price

От...

До...

9

AVG price

От

До

10

1 — Address

Paste a wallet address here if you know it.

2 — Success in 2021

A subjective success score for 2021. Use with care, as the data covers a limited period and there's no guarantee the wallet behaved the same after 2021.

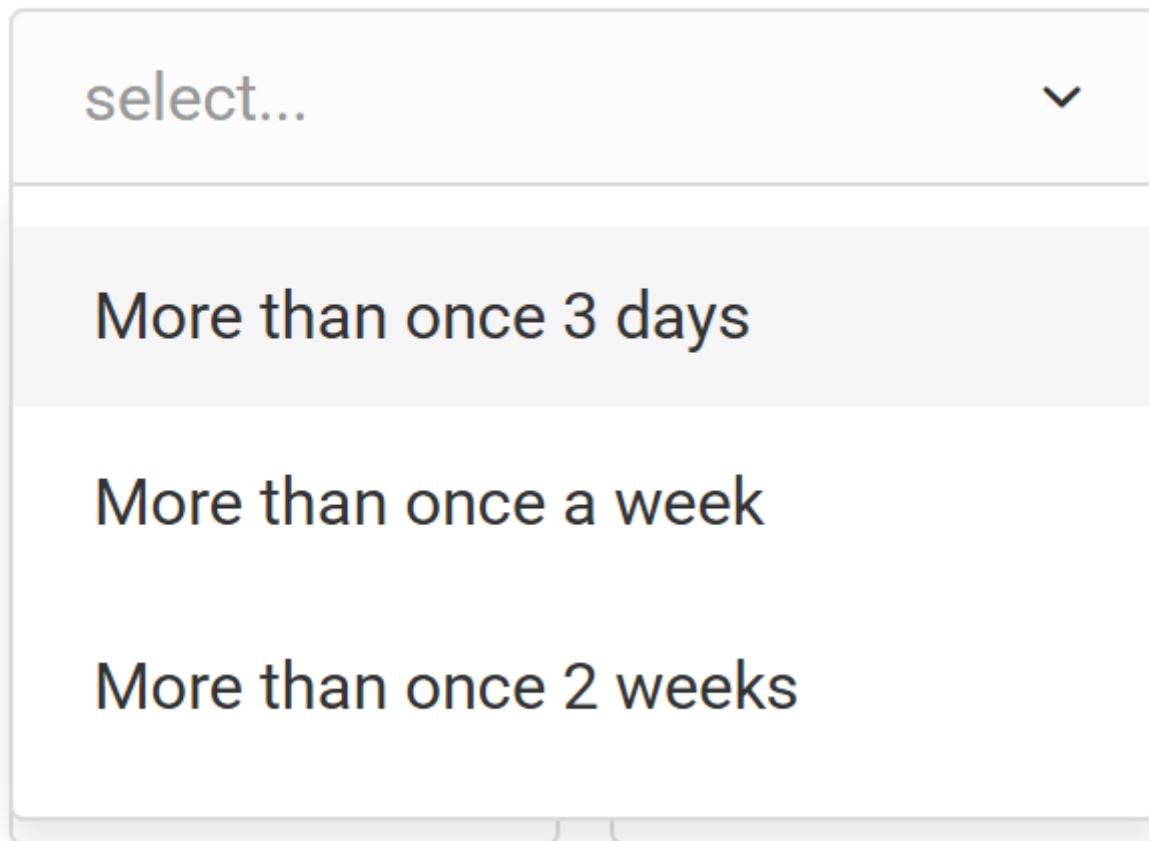
3 — First active date earlier than

Set a date before which the wallet must have been active.

4 — Last active date

Set the date when the wallet was last active.

AVG wallet activity



The image shows a dropdown menu with a light gray header containing the text "select..." and a downward-pointing chevron icon. Below the header, there are three menu items: "More than once 3 days" (highlighted with a light gray background), "More than once a week", and "More than once 2 weeks".

More than once per 3 days — on average more than once every 3 days over the full history.

More than once a week — on average more than once a week over the full history.

More than twice a week — on average more than two times per week over the full history.

6 — Balance

Specify the current wallet balance (value range).

7 — Last transaction volume

Specify the volume of the last documented transaction in the database.

8 — AVG buy price

The average price at which the wallet bought BTC (more precisely, the average BTCUSDT rate at the times when BTC arrived to the wallet).

9 — AVG sell price

The average price at which the wallet sold BTC (the average BTCUSDT rate at the times when BTC left the wallet).

10 — AVG price

The current average price of the wallet's assets.

11 — Total money spent USD

Total amount of USD presumably spent to buy BTC.

12 — Total money received USD

Total amount of USD presumably received from selling BTC.

4.3. How to use

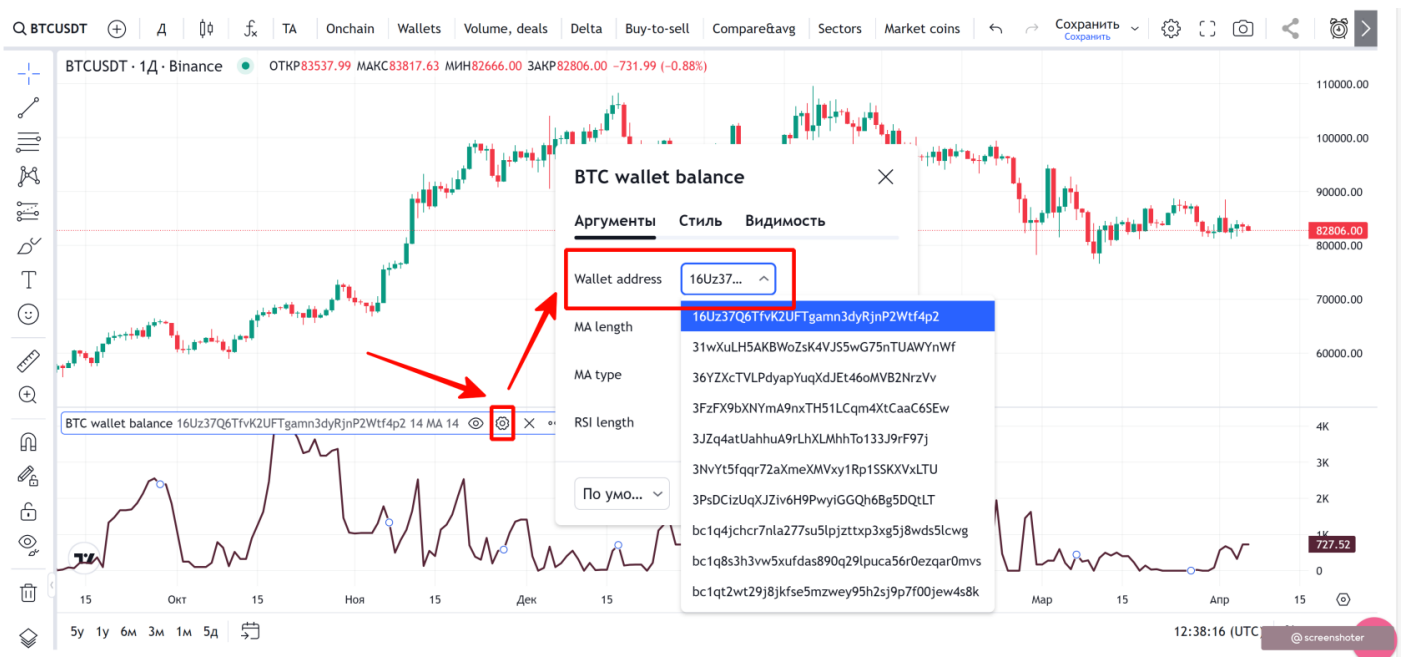
The workflow is straightforward: filter data on the left (1) and get a list of specific wallets on the right (2). Then add the interesting wallets to Favorites.

select...	12ken5PwHeA6YnD3272S1beaSdGN46cEBh	1 130	-50	97 301,62	86 524,26	85 079,37	-553 027,98	0%	☆
First active date earlier than	13uZyaPbt4r7wYQ8xWFySVUzWH3pk2P5c7	2 615	20	74 892,67	37 894,92	38 995,41	0	0%	☆
ДД. ММ. ГГГГ	1579iB8kkNBjdnJaBvm1UyN78dqJ2XbGk	2 171	1 368,91	83 484,23	84 020,67	82 821,6	0	0%	☆
Last active date	15MDAHnxt9TMC2Rj595hsg8Hnv693pPBB	1 251	3	89 549,54	46 367,08	49 318,41	0	0%	☆
ДД. ММ. ГГГГ	15v6EY6MygNcN6eQZysGqJS5HaHs1YeRi	1 730	-16	84 334,9	40 745,4	40 995,09	-13 358,58	25%	☆
AVG wallet activity	162bz2T2HJfv5Gm3ZmWfWfHJjCtMD6rHhw	3 490	120	85 602,18	43 391,82	46 860,74	0	0%	☆
More than once 3 days	17RPSJDIYlJ1nj7Qrvv4VrAR3Bx1kK15E	1 683	-12	87 776,99	50 237,79	52 236,95	-53 723,74	75%	☆
Balance	18BrMYkUtZkcUojwVFRVYqhfUoSrSFBjT	2 907	1	84 647,75	87 402,12	90 933,5	0	0%	☆
1111	18DowXoMUQT5EU8zPTDTTrq4hrwmi8ddCcc	5 571	1	47 337,7	34 807,91	35 827,23	0	0%	☆
Last transaction volume	1Ay8vMC7R1UbyCCZRVULMV7iQpHSAbgwJP	58 280	302	51 569,34	41 037,27	52 624,25	0	0%	☆
От... До...	1Fpqp8ndhtvWEqqCFepjeURAIbvruot5E	2 353	53	68 520,26	49 944,13	47 882,59	0	50%	☆
AVG buy price	1GwDkr33gT6LuumniYjKEGjTLhsL5krmqC	9 565	19	84 224,27	50 561,96	49 810,57	0	0%	☆
От... До...	1JfNy9iKyhduGWF6NKDXSDZTgRW6Edeh6	1 725	-73	56 161,06	30 594,63	26 682,15	2 031 502,14	0%	☆
AVG sell price	1KNm4K8GUK8sMoxc2Z3zU8Uv5FDVjrA72p	5 314	1	90 978,96	36 745,53	36 958,5	0	0%	☆
От... До...	1Kr6QSydw9bFQG1mXiPNU6WpJGmUa9i1g	2 975	6	83 109,34	14 067,89	14 051,16	0	0%	☆
AVG price	1N52wHoVR79PMDishab2XmRHsbekCdGquK	2 929	-1	42 563,97	9 779,25	9 824,12	24 460,03	75%	☆
От... До...	3276STGdvQax3abpkpPqF3keCVgVqLcbpm	2 029	38	73 457,33	46 396,51	47 007,66	0	0%	☆
Total money spent usd	32ixEdVJWo3kmvJGMTZq5jAQVZzeuwnqzo	6 138	1	71 983,13	71 983,13	0	0	0%	☆
От... До...	32jhgBZ8hrrYvYaEqmz75BBve6rxdVyuR8	1 227	-400	41 969,22	41 574,74	82 956,15	16 546 709,86	0%	☆
32retgqZVivrtgbaJJYDMMVop9J55G3w6cC	18 633	61	87 298,13	78 617,66	77 496,11	0	0%	☆	
33j5fuJc14aff3Z6vHZBxaHEKMDnmKbRxQ	1 996	-11	91 427,36	42 185,06	39 878,93	-91 488,29	50%	☆	
34X3kp5PTraR9dA9Zf9XwivpE6tnNjdHKB	5 456	1	82 805,46	45 591,45	35 606,89	0	25%	☆	



If you like what you see, i.e., you spot some patterns, you can add that wallet to Favorites.

After that, go to the [chart](#) module and open the wallet indicator there, for example, BTC wallet balance:



Select the desired wallet and view it on a familiar, convenient chart with all TradingView features.

How to set up notifications about wallet actions

Let's say you found a wallet you want to follow. Now set up notifications for its actions. For simplicity, we'll show alerts on the wallet balance change metric. As a concrete example, let's take wallet 3JZq4atUahhuA9rLhXLMhhTo133J9rF97j on the 4h timeframe.



The chart shows this wallet usually holds about 27,000 BTC, which is often its local maximum. Note that when it sharply “drops” the balance from this number by 27% or more, we can interpret it as the whale’s opinion of an upcoming correction of about 13–14%.

How do we set such a notification?

- 1) Right-click anywhere in the free space on the chart and select “Add alert for wallet”.

Добавить алерт...

Добавить множественный алерт...

Добавить МА алерт...

Добавить алерт для кошелька...

Сбросить состояние графика Alt + R

Копировать цену 93496.38

Вставить Ctrl + V

Зафиксировать вертикальную линию курсора по времени

Удалить объекты рисования

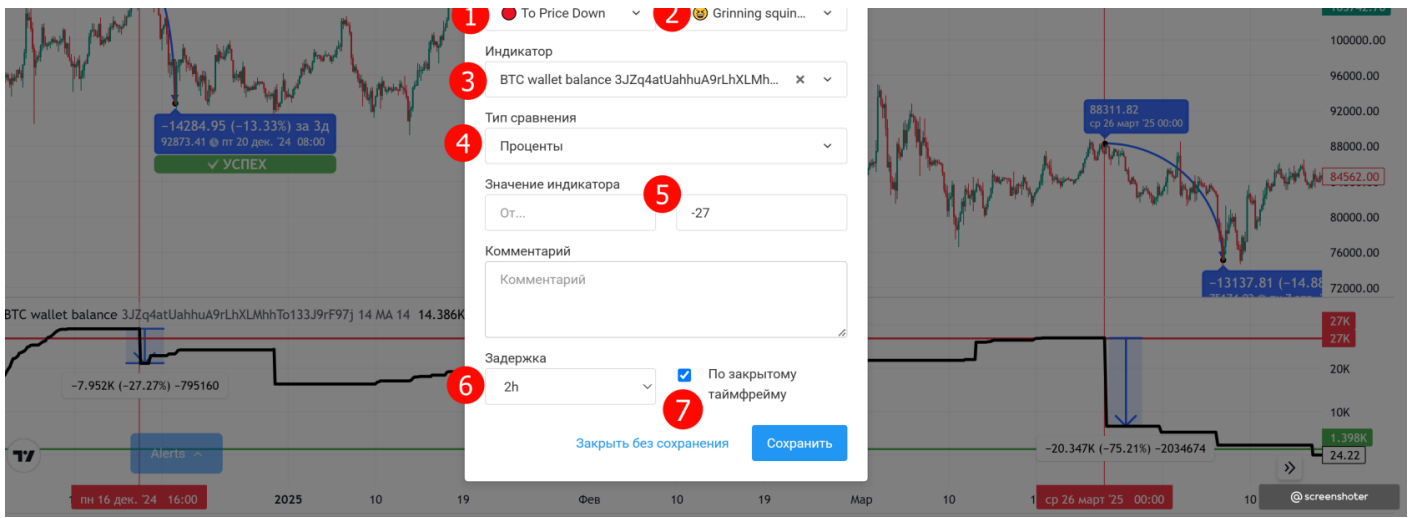
Удалить индикаторы

Скрыть отметки на барах

Настройки...

@ screenshoter

2) In the dialog, choose the following settings:



1 — Direction

To Price Down means we expect the price to go down as a result of this alert (the second value, To Price Up, is the opposite).

2 — Icon

Choose any you like. It's only for visual styling (useful when you have a couple hundred alerts and need visual differentiation).

3 — Indicator

In this case, there's just one option: the balance of the wallet currently displayed on the chart.

4 — Comparison type

Select **Percent**. If you leave the "From" field empty and put a negative value in "To" (e.g., -27), it means we look for wallet balance changes less than -27%. In other words, the setting is interpreted as $(-\infty; -27\%)$.

You can also set the comparison type to **Absolute numbers**. In that case you could enter exact balance levels you are tracking.

5 — Comment

You can leave it blank. We recommend adding a short note, e.g., that we're watching for significant reactions from around the 27,000 BTC level.

6 — Delay

“2 hours” means that during the processing period on the 4h timeframe you will receive at most 2 alerts. If you set “4 hours”, then on the 4h timeframe you will receive just one alert.

7 — On closed timeframe

We recommend keeping this enabled, otherwise the script will work on the current, still-open timeframe. That can cause frequent data changes and noisy alerts.

After configuring your alert, make sure you are subscribed to our Telegram bot https://t.me/bantpro_anomaly_bot, which delivers the final message.

Revision #1

Created 20 August 2025 13:12:11 by Admin

Updated 20 August 2025 13:12:21 by Admin