

3. Chart module

Module link: <https://my.whalepro.org/chart/>

3.1. Chart overview

The platform's chart module is built on top of the TradingView library.

It includes many custom settings we've added.

The module can be used in many ways to obtain and analyze market information. Some examples:

1. Visual display of very different indicators on a single chart. For example, display buy/sell anomalies together with BTC whale wallet cohorts. This unusual combination of metrics helps users discover non-obvious correlations that influence price.
2. You can create alerts on charts. Alerts are messages sent to the Telegram bot. These same alerts can also serve as a basis for rules in the Tracker module.
3. You can view other users' charts if they have "shared" them. There is a dedicated right-hand sidebar for this.
4. The "Chart" module is convenient to use together with the "Segmenter" module to view previously created segments.
5. The chart is used in the "Backtest" and "Dashboards" modules too.
6. And much more.

General view of the module

When you open the "Chart" module for the first time or via the link <https://my.whalepro.org/chart/>, especially on a small screen device (tablet or laptop), you will likely see the following screen:

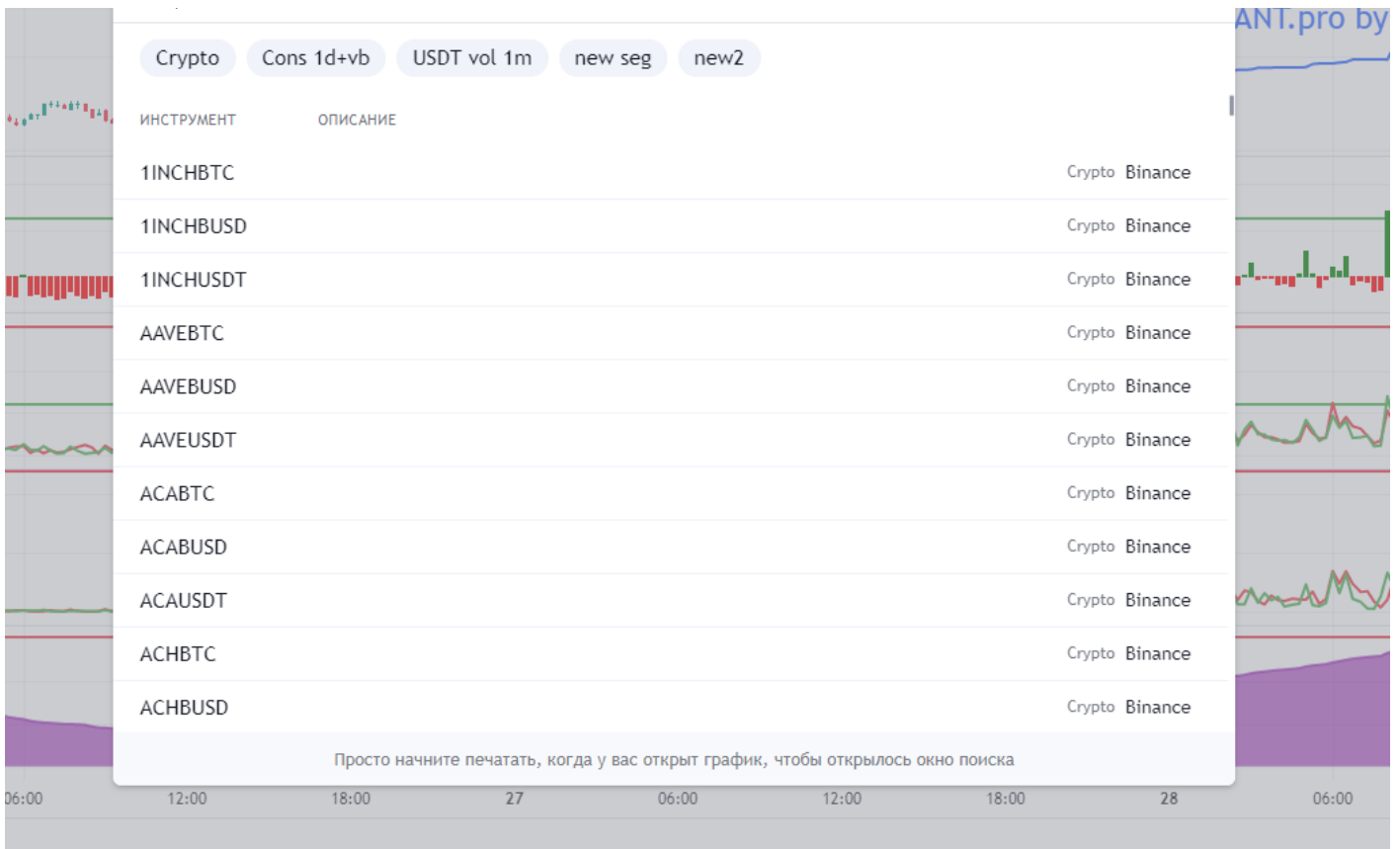


1 — Information links bar for the module:

- Manual — link to the platform wiki.
- Indicators description — link to [indicators description \(Google Sheet\)](#)
- Selector — Light/Dark theme switcher

2 — Choose the crypto trading pair to display.

Clicking opens a popup where, after selecting a segment (the “Crypto” segment is available by default), you can choose a pair from the list. See the “Segmenter” section for more details on the connection between Chart and Segmenter.



3 — Settings group

Timeframe selection

5 минут

15 минут

30 минут

ЧАСЫ



1 час

2 часа

4 часа

6 часов

12 часов

ДНИ



1 день

1 неделя

Chart type for the main trading pair



Пустые свечи



Столбцы



Линия



Линия с точками



Ступенчатая линия



Область



HLC area



Базовая линия



Мин-Макс



Хейкен Аши

List of all platform indicators with search

ИМЯ СКРИПТА

%B Полос Боллинджера

Accelerator Oscillator

Accumulated profit

All deals amount

Average buy volume in second per minute

Average buy volume of all deals

Average buy volume per minute

Average buy volume per trade

Average buys in the last 30 days

Average number of buy-deals in second per minute

Average number of buy-deals per minute

Average number of deals in second per minute

Average number of deals per minute

Average number of sell-deals in second per minute

4 — Indicator groups

They were described above.

5 — Counters of available chart layouts and chart alerts. Depend on plan limits.

6 — Shared charts side panel.

Charts shared by users appear in this list. Visibility rules: charts shared on the Free plan are visible without restrictions. Charts shared on the Professional plan are visible only to users whose plan is Professional or higher. Note: sharing a link lets any registered user open it, regardless of plan.

Use filters for easier search:

Select pairs



Select timeframes



Select users



Order by rate desc



BTCUSDT (1d)



BTCUSDT XRP onchain

☆(5)

Elek**

FTMUSDT (2h)



FTMUSDT 2h gen_09.2022

☆(3)

My chart

BTCUSDT (1d)



BTCUSDT 1d Coins

vol24_mcap_reserves

☆(2)

My chart

BTCUSDT (1d)



BTCUSDT 1000 -10 000

07:0

ЛОГ АВТО

More details on chart sharing are in the next section.



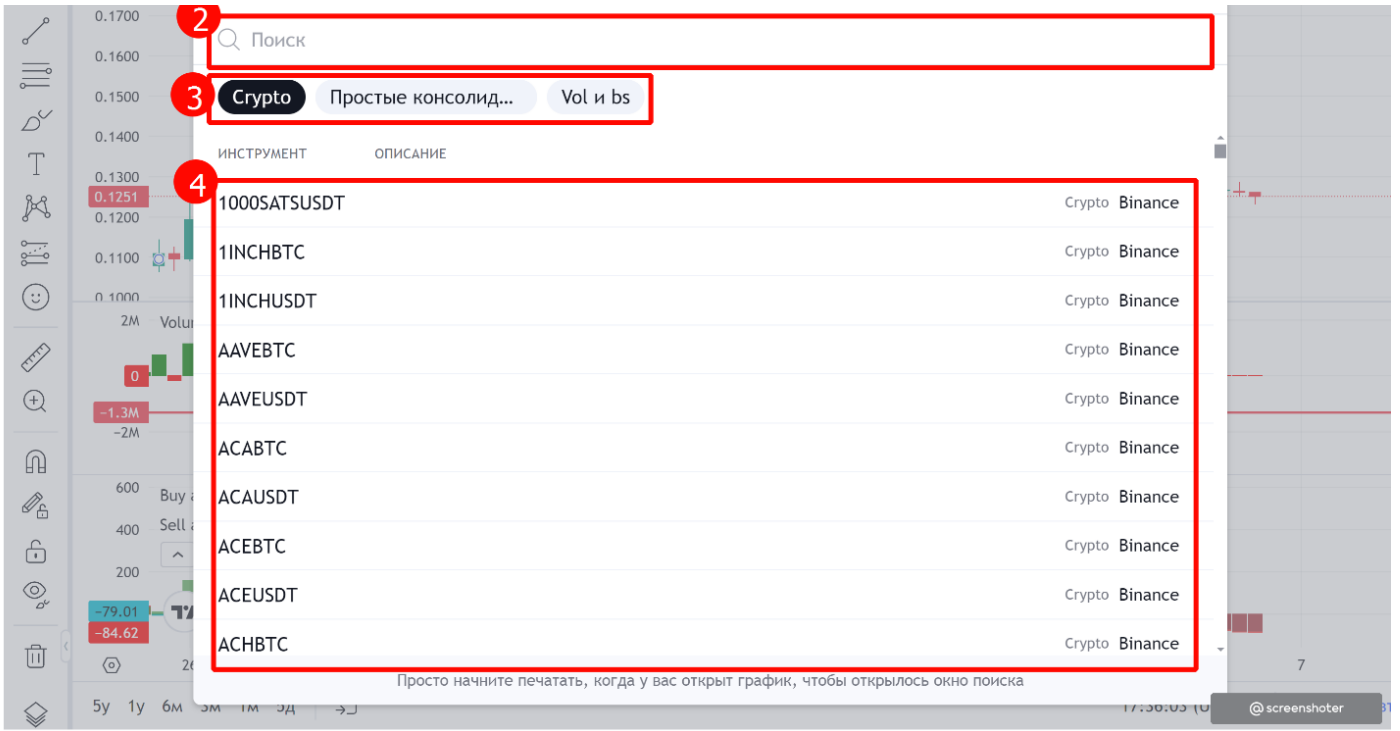
1. Undo/redo buttons — TradingView standard functionality
2. “Save” button — saves chart changes; its dropdown also lets you duplicate a chart
3. Settings button
4. Full-screen button
5. Screenshot button
6. Chart sharing button (details in the next section)
7. Alerts list button

3.2. Alerts from the chart: notifications to tg-bot

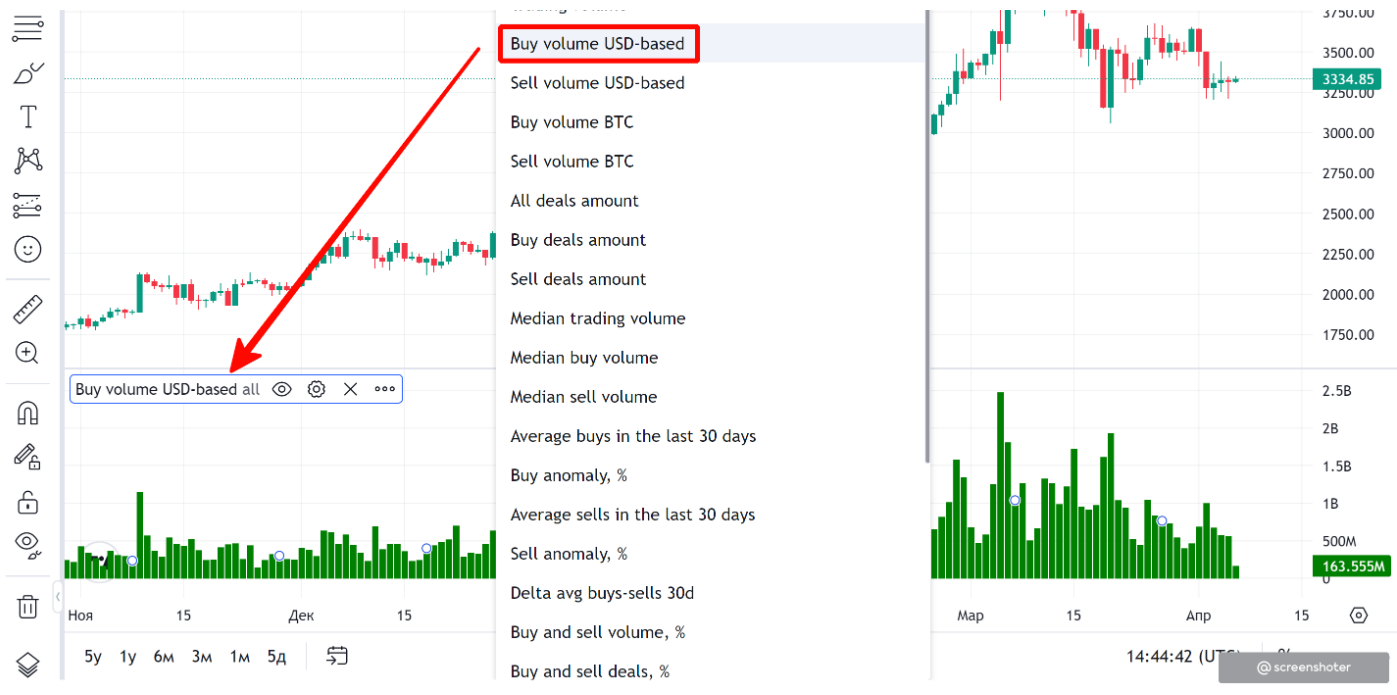
How to add an indicator to the chart

To add an indicator to the chart, first select a trading pair to analyze.

Click the top-left corner of the chart area (1), then either search for a pair or select a previously saved Segmenter segment (3). Your actions will result in the system showing one or more suitable pairs in the popup area (4).



For example, here are purchases displayed:



How to share a chart with other users

Since July 2023, every registered user can share their chart via link with other users.

How to share charts:

1. To make your chart visible to others, share it first.

Do two steps:

- click the columns icon in the chart's top-right corner,
- in the opened sidebar click the plus icon.

After that you can take the link from the browser's address bar and send it anywhere.

2. The link is automatically generated with a unique identifier. If it didn't generate for a previously saved chart, just re-save the chart by clicking "Save" after any minor change.

Then copy the link from the browser bar and share it. This is convenient for showcasing your trading ideas and receiving feedback.

3. If you send a link to a chart that is NOT shared, the recipient will see a popup saying the chart is not found or not shared.

4. The shared charts sidebar has convenient filters.

You can filter shared charts by:

- trading pair
- timeframe
- user (author)

You can also view only your charts (Show only my charts) and reset filters if necessary.

5. To stop sharing a chart click the red trash icon next to the chart name.

Don't worry: this removes sharing but does NOT delete the chart from your charts.

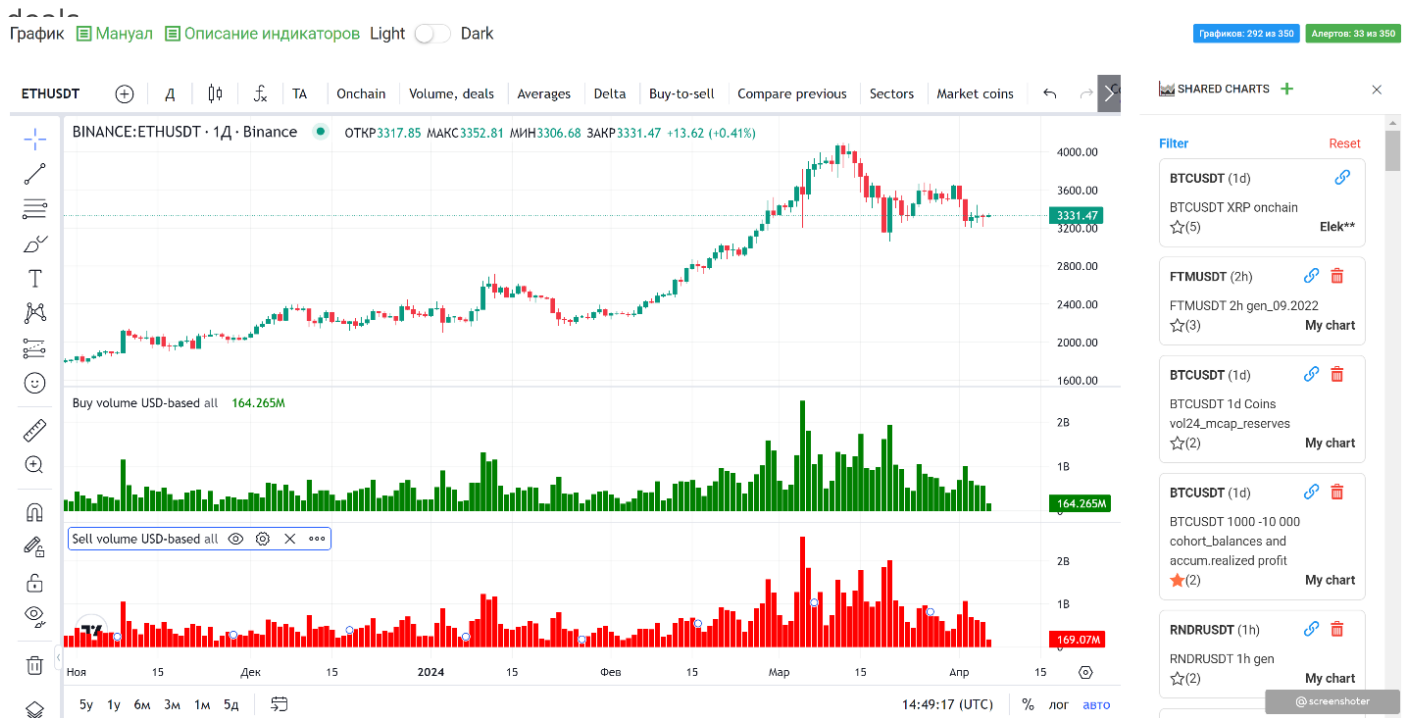
6. Which charts are visible in the sidebar depends on the user's plan. Free charts are visible to everyone, Starter charts only to Starter and Professional, Professional charts only to Professional.

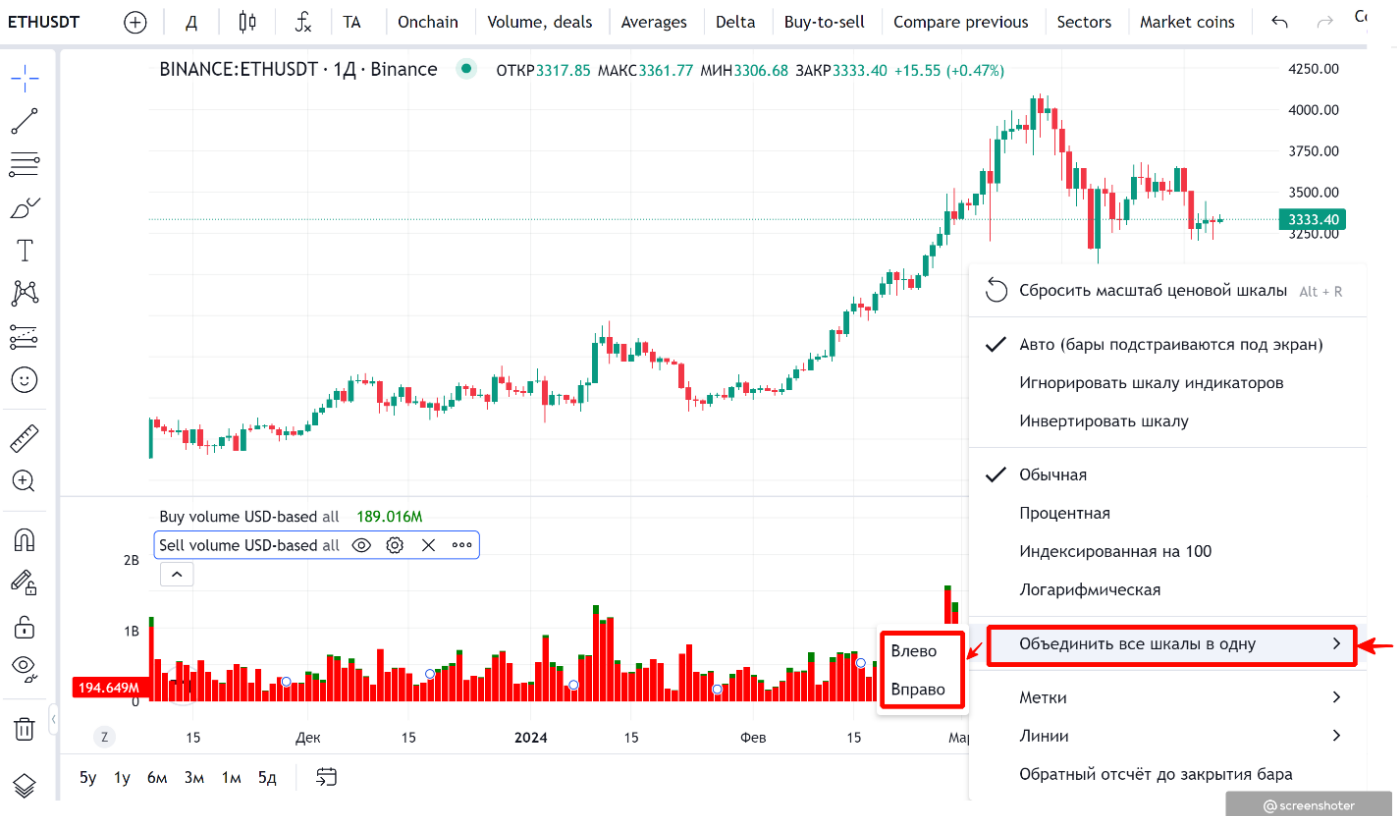
However, a user on the Professional plan can still send a direct link to any user (e.g. on Free). In that case a warning may appear that not all indicators may be visible due to plan limits. If the shared chart uses up to 5 indicators (Basic limit), a Basic user will see all data.

How to place several indicators on the same axis

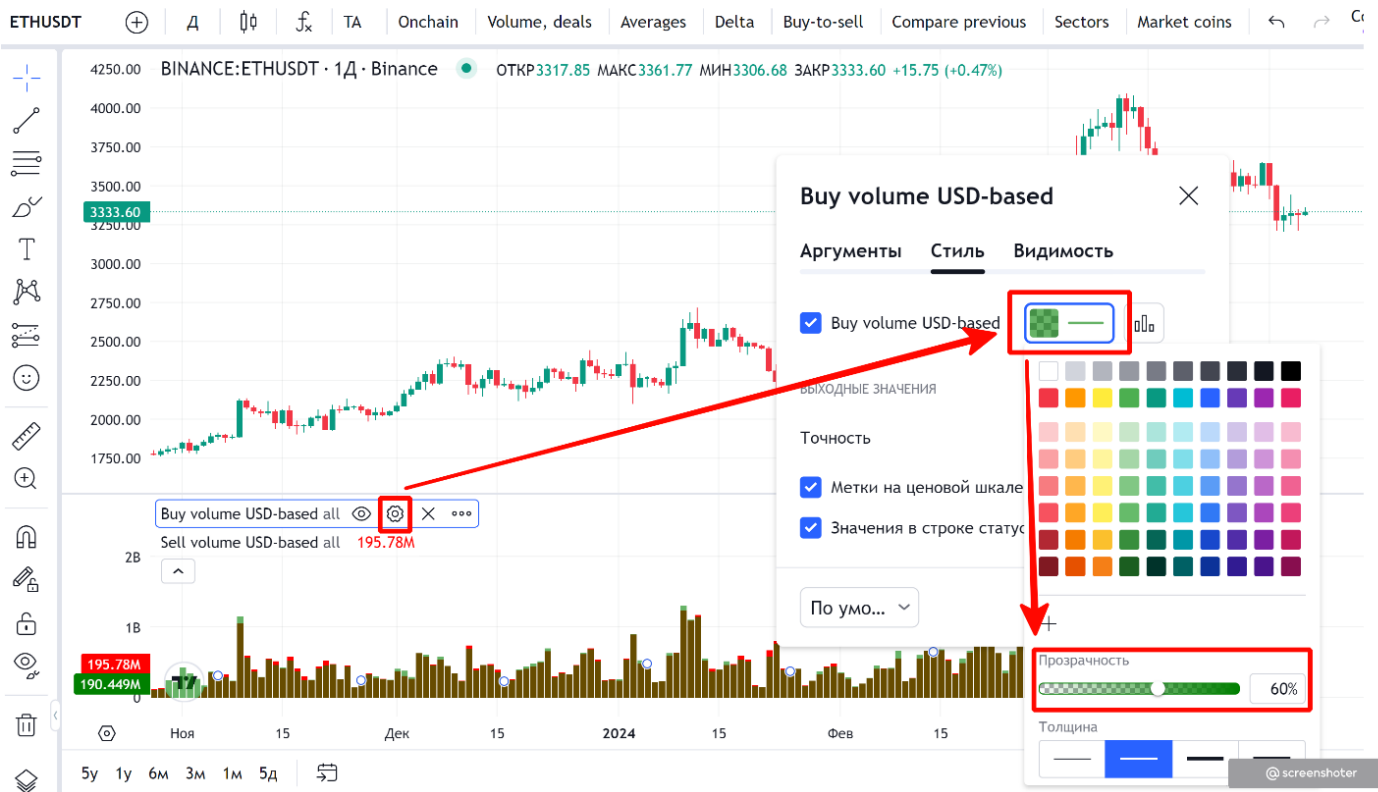
General recommendation for paired indicators — place them on the same axis. A paired indicator has a logical counterpart. For example, for “Buy volume USD-based” it is “Sell volume USD-based”.

On any pair you can add the sell indicator to the buy indicator from the same category Volume,





We get this layout of indicators on one axis:



How to copy a chart

To copy a chart:

1. Open the chart you want to copy

2. Click the “Save” button at the top of the chart
3. In the dropdown choose “Save as”
4. Enter a new name for the copy
5. Click “Save”

You will then have a copy which you can edit independently of the original.

How to create an alert on the chart

Alerts (notifications) are a powerful tool to get notified about important market events directly in the Telegram bot.

To create an alert:

1. Add to the chart the indicator you want to be notified about
2. Right-click the indicator and choose “Add alert”
3. In the window that appears, configure the trigger conditions:
 - Choose condition (crossing a level, out of range, etc.)
 - Specify the trigger value
 - Set the notification text
4. Click “Create”

After creating an alert, when the conditions are met you will receive a notification in the Telegram bot.

Important: to receive notifications you must be subscribed to the platform bot:

https://t.me/bantpro_anomaly_bot

Revision #1

Created 20 August 2025 13:12:11 by Admin

Updated 20 August 2025 13:12:18 by Admin